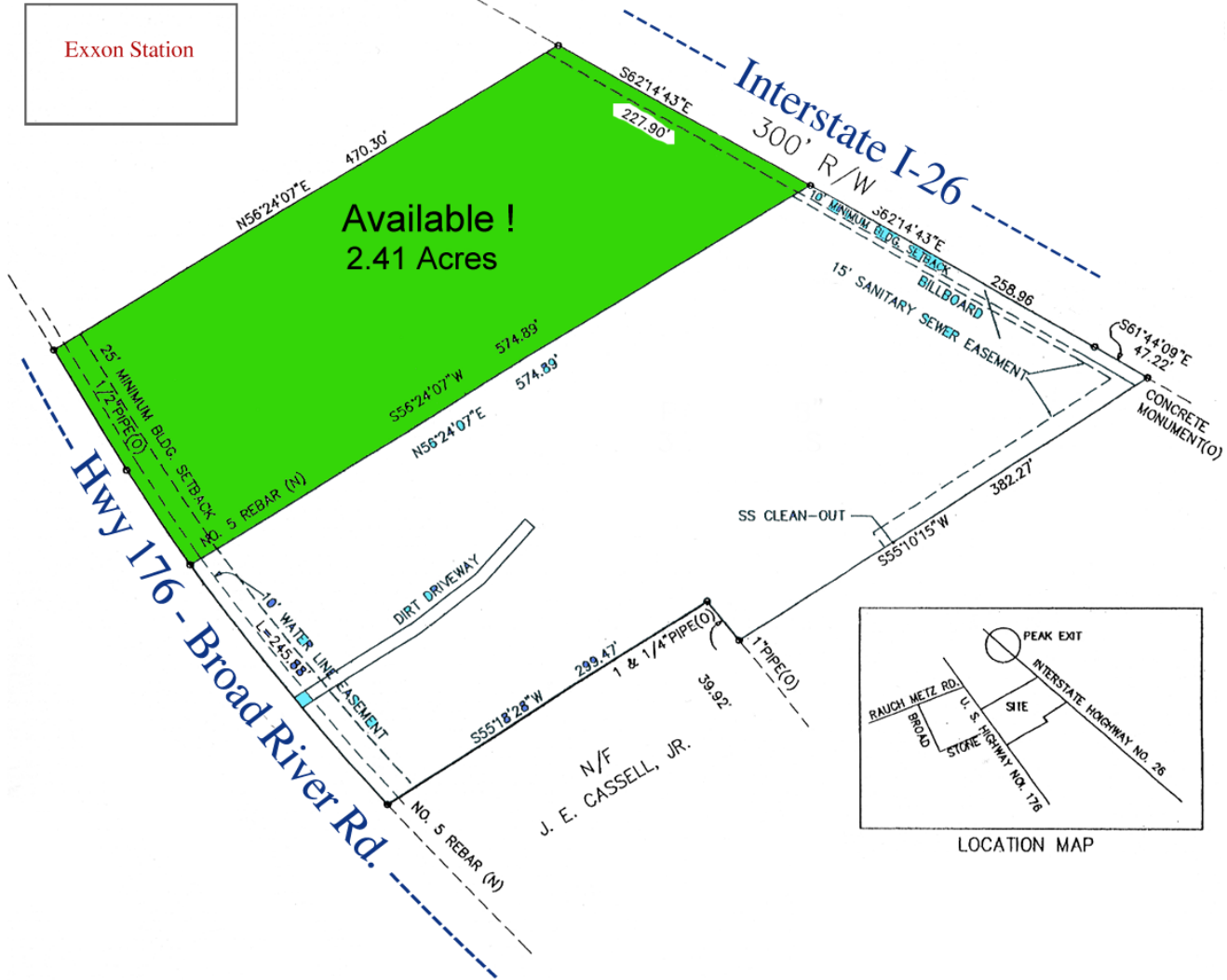


For Sale

2.41 acres at the Peak Interchange of I-26



City water & sewer, 200ft frontage on Broad River Rd, +/-220Ft of frontage on I-26

Price \$400k/acre : total = \$964,000

Dial, Dunlap & Edwards, LLC

COMMERCIAL REAL ESTATE

Contact : Robin H. Dial, Jr.

Office : 803.400.9405

Fax 803.799.4288

Cell 415.420.2149