

# Dial, Dunlap & Edwards, LLC

COMMERCIAL REAL ESTATE

PUTTING CLIENTS FIRST

# Trotter Road & Rabbit Run Columbia, SC

Located on Busy  
Corner

Ideal as a Retail or  
Service Site

Zoned C-3 (General  
Commercial)

City water and  
Sewer nearby

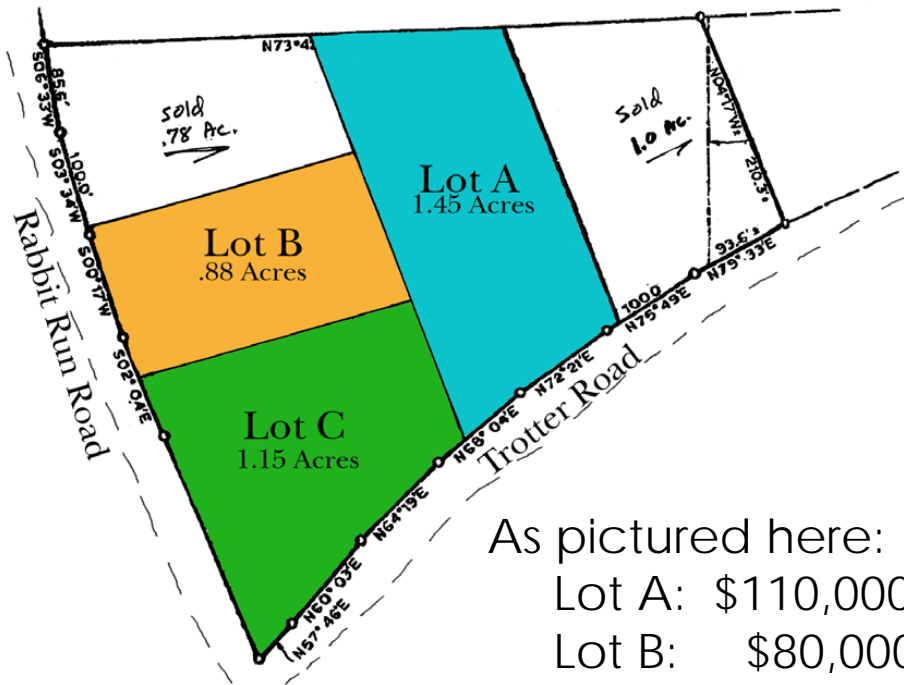
For more information  
contact:

Robin H. Dial, Jr.  
Direct: 803-400-9405  
rhd2@dderealestate.com

1122 Barnwell Street  
Columbia, SC 29201  
Phone: (803) 799-6244  
Fax: (803) 799-4288

Email: info@dderealestate.com  
Website: www.dderealestate.com

## FOR SALE 3.48 Acres



As pictured here:  
Lot A: \$110,000  
Lot B: \$80,000  
Lot C: \$185,000

Three lots can be re-arranged or combined



Subdivisions surrounding the property include:

Alexander Pointe: 130+ homes

Meyer's Creek: 110 homes

Rosecliffe: 74 new homes

Surry Place: 100 homes

The Farm at Mcordsferry: 699 new homes

Willow Tree 107 homes

**Dial, Dunlap  
& Edwards, LLC**

COMMERCIAL REAL ESTATE