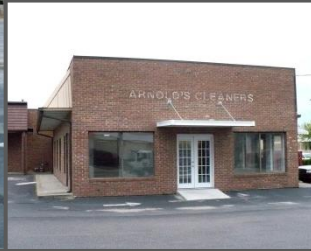


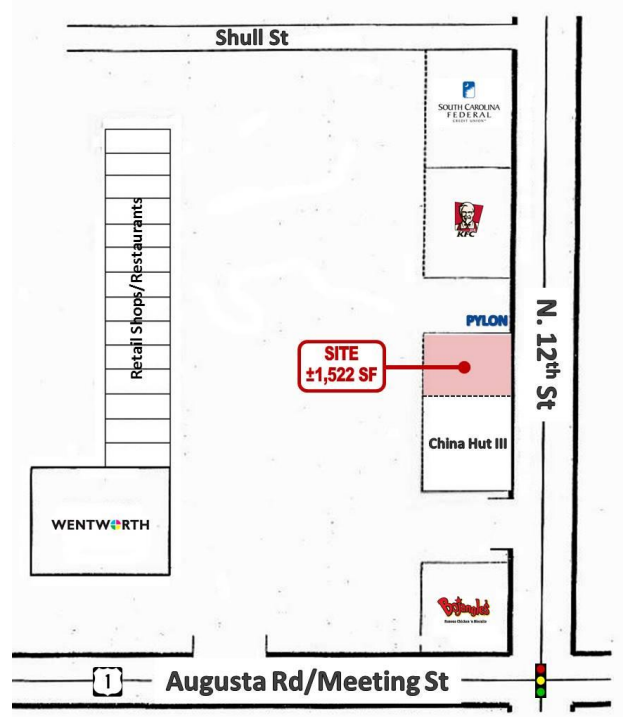
105 N. 12<sup>th</sup> Street  
 West Columbia, SC 29169

Retail  
 FOR LEASE



- Free-Standing Building  
 ~ ±1,522 SF  
 ~ \$17.00 PSF, NN
- Estimated Taxes & Insurance ~  
 \$1.75 PSF
- Pylon Signage Available
- Front N. 12<sup>th</sup> Street with High  
 Visibility and Exposure
- Excellent Location in the  
 Heart of West Columbia
- Strong Demographics

Site Plan



2015 DEMOGRAPHICS			
	1-mile	3-mile	5-mile
Population:	8,240	57,463	136,553
# Households:	3,469	23,793	57,456
Avg. Income:	\$51,338	\$51,429	\$52,008

**Dial, Dunlap  
 & Edwards, LLC**  
 COMMERCIAL REAL ESTATE  
 PUTTING CLIENTS FIRST

1122 Barnwell Street  
 Columbia, SC 29201  
 P: 803.799.6244  
 F: 803.799.4288  
[www.dderealestate.com](http://www.dderealestate.com)

For more information, please  
 contact:  
 Kathy Edwards  
 Direct: 803.400.9401  
[kedwards@dderealestate.com](mailto:kedwards@dderealestate.com)

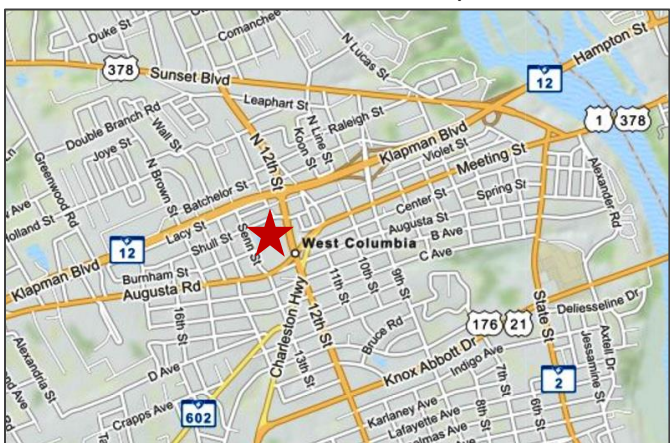
© Dial, Dunlap & Edwards, LLC. The information above has been obtained from sources believed reliable. While we do not doubt its accuracy, we have not verified it and make no guarantee, warranty or representation about it. It is your responsibility to independently confirm its accuracy and completeness.

105 N. 12<sup>th</sup> Street  
 West Columbia, SC 29169

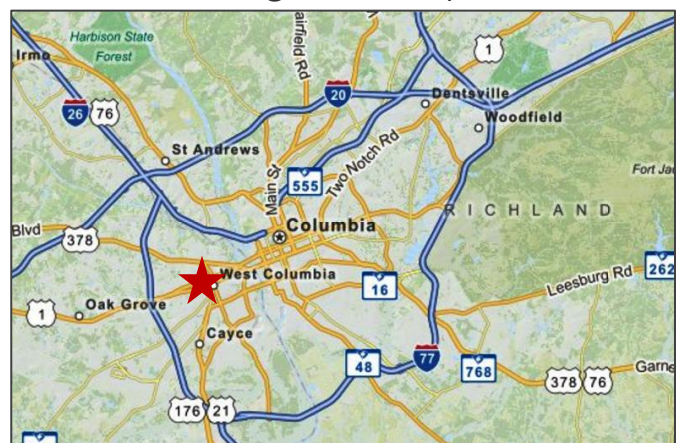
Retail  
 FOR LEASE



Locational Map



Regional Map



**Dial, Dunlap  
 & Edwards, LLC**  
 COMMERCIAL REAL ESTATE  
 PUTTING CLIENTS FIRST

1122 Barnwell Street  
 Columbia, SC 29201  
 P: 803.799.6244  
 F: 803.799.4288  
[www.dderealestate.com](http://www.dderealestate.com)

For more information, please contact:  
 Kathy Edwards  
 Direct: 803.400.9401  
[kedwards@dderealestate.com](mailto:kedwards@dderealestate.com)

© Dial, Dunlap & Edwards, LLC. The information above has been obtained from sources believed reliable. While we do not doubt its accuracy, we have not verified it and make no guarantee, warranty or representation about it. It is your responsibility to independently confirm its accuracy and completeness.